

CERTIFICATE OF LOCATION OF GOVERNMENT CORNER

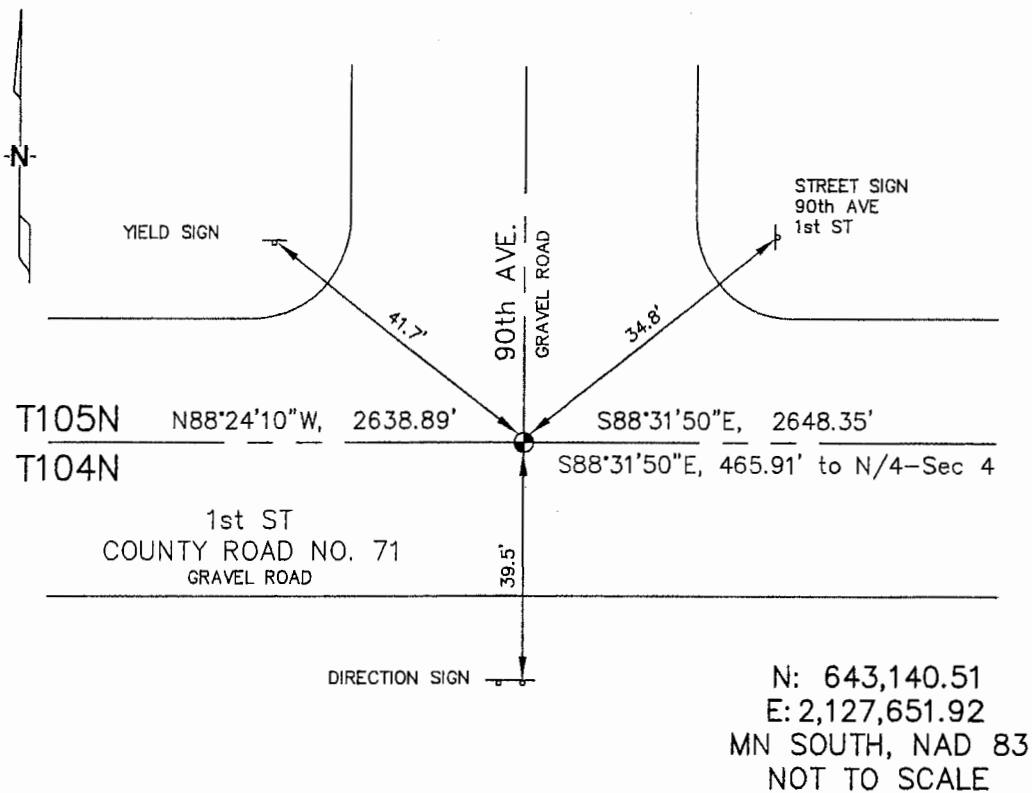
SOUTHWEST Corner of Section 34, Township 105N, Range 42W, 5TH P.M.

STATE OF MINNESOTA, County of MURRAY

At the corner location shown on the sketch :

- On _____ found _____
- left monument as found, lowered monument, removed monument (explain)
- On 2/03/2006 set 5/8" REBAR WITH CAP: RLS 44563,
IN C/L OF GRAVEL ROADS.

Sketch of reference ties



Statement of evidence relative to this corner location is on back page

I hereby certify that this document and the data contained herein was prepared by me or under my direct supervision.

James V. Johnson 7/05/06
 Signature Date

Registration No. 44563

- Land Surveyor, Professional Engineer
- County Surveyor, County Engineer

OFFICE OF THE COUNTY RECORDER

County of _____

SEP 28 2006

I hereby certify that this document was filed in the Co. Recorders office at _____ .M. on the day of _____ A.D. , 20

County Recorder James V. Johnson
 By _____, Deputy

DOCUMENT NO. _____

STATEMENT OF EVIDENCE:

SOUTHWEST CORNER, SECTION 34, T. 105 N., R. 42 W.,
MURRAY COUNTY, MINNESOTA

- 1858 W.J. Niely, US. Deputy Surveyor, monumented south township line.
- 12/03/1976 Murray Co., found a concrete monument on corner.
Ties: NE-50.4' to tack on corner fence post;
NW-38.3' to tack on sign post.
- 2/03/2006 Ulteig Engineers, Inc., Survey Crew, Brian Payne Party Chief,
found nothing. Set a 5/8" rebar with cap: RLS 44563 in C/L
intersection of gravel roads.
Ties: NE-34.8' to "Street Sign" post;
NW-41.7' to "Yield Sign" post;
S-39.5' to east post of "Direction Sign";
E-2648.35' to S 1/4 corner, Section 34;
E-465.91' to N 1/4 corner, Section 4, T104N;
W-2638.89' to S 1/4 corner, Section 33.